

**Irish Theatre Institute**

in association with ABSOLUTE FRINGE 2009, Dublin Fringe Festival present

# Information Toolbox 2009

Friday September 11, Speigeltent, George's Dock, 11am - 3pm

Attending Irish & International Organisations

- \* **Information on each organisation**
- \* **Contact details for representatives**
- \* **Talk points you may want to discuss**

# Irish Theatre Institute Information Toolbox 2009

Attending Irish & International Organisations

Funding Organisations, Festivals, Venues, Support Organisations,  
Producers & Promoters attending the event

<u>Irish</u>	Page
• <b>Funding Organisations</b>	
<b>The Arts Council</b> - Maeve Whelan (Theatre, Circus & Literature Assistant)	<b>3</b>
<b>Culture Ireland</b> - Madeline Boughton (Director of Projects and Promotions)	<b>3</b>
<b>Dublin City Council Arts Office</b> – Sinead Connolly (Arts Officer)	<b>4</b>
• <b>Festivals</b>	
<b>Kinsale Arts Week</b> – Michelle Carew	<b>5</b>
• <b>Venues</b>	
<b>Abbey Theatre</b> Literary Department – Aideen Howard (Literary Director)	<b>5</b>
<b>Axis Arts Centre</b> - Ray Yeates (Artistic Director)	<b>6</b>
<b>Backstage Theatre</b> - Mona Considine (Director)	<b>7</b>
<b>The Belltable</b> - Joanne Beirne (Artistic Director)	<b>8</b>
<b>Draíocht</b> – Emer McGowan (Director)	<b>8</b>
<b>The George Bernard Shaw Theatre</b> – Róisín McGarr (Theatre Manager)	<b>9</b>
<b>The Mill Theatre</b> - Stephen Faloon (Theatre Manager)	<b>10</b>
<b>Pavilion Theatre</b> – Martin Murphy (Director)	<b>10</b>
<b>Project Arts Centre</b> - Willie White (Artistic Director)	<b>11</b>
• <b>Support Organisations</b>	
<b>Create</b> - Katherine Atkinson (Project Support and Professional Development)	<b>12</b>
<b>Irish Theatre Institute</b> – Siobhán Bourke (Co-Director) & Jen Coppinger (Information & Events Manager)	<b>12</b>
<b>Theatre Forum</b> - Irma McLoughlin (Development & Membership Officer)	<b>13</b>
• <b>Other</b>	
<b>Blood+Bandage</b> - Tony McClean-Fay & Julie Kelliher	<b>14</b>
• <b>Rough Magic - AIB Seeds Programme</b> - Cian O'Brien (Associate Producer)	<b>15</b>
<hr/>	
<u>International</u>	
• <b>Producers/Promoters</b>	
<b>Paul Lucas Productions</b> - Paul Lucas	<b>15</b>
<b>SCAMP Theatre</b> - Louise Callow & Jennifer Sutherland	<b>16</b>
• <b>Festivals</b>	
<b>4+4 Days in Motion, International Theatre Festival, Prague</b> - Pavel Štorek (Artistic Director)	<b>17</b>
<b>Adelaide Fringe</b> - Michelle Wigg (Artist Services Department)	<b>17</b>
<b>Brighton Festival Fringe</b> – Nick Stockman (Executive Manager)	<b>18</b>
<b>Edinburgh Festival Fringe</b> - Dani Rae (Promoter Liaison Officer)	<b>19</b>
<b>TEATROMANIA</b> (Festival Artistic Director) & <b>The Bytom Centre of Culture</b> (Head of the Events Department) Poland - Dagmara Gumkowska	<b>20</b>
• <b>Venues</b>	
<b>The Arches, Glasgow</b> – LJ Dodd (Arts Programme Producer)	<b>21</b>
<b>Forest Fringe, Edinburgh &amp; London</b> - Deborah Pearson (Founder & Co-Director)	<b>21</b>
<b>The Junction, Cambridge</b> Richard Oyarzabal (Chief Executive)	<b>22</b>

## Funding Organisations

---

### The Arts Council



Maeve Whelan

#### Maeve Whelan (Theatre, Circus & Literature Assistant)

70 Merrion Square, Dublin 2  
+353 (0)1 6197805  
[maeve.whelan@artscouncil.ie](mailto:maeve.whelan@artscouncil.ie)  
[www.artscouncil.ie](http://www.artscouncil.ie)

**The Arts Council** is the national agency for funding, developing and promoting the arts in Ireland. The Council recognises that the arts have a central and distinctive contribution to make to our evolving society. Established in 1951, to stimulate public interest in and promote the knowledge, appreciation and practice of the arts, the Council is an autonomous body, which is under the aegis of the Department of Arts, Sport and Tourism.

The Arts Council is a voluntary body of 12 members and a chair, appointed by the Minister for Arts, Sport and Tourism for a term of five years. The current Council was appointed in 2008.

The ongoing work of the Arts Council is delivered by the executive. In addition to the Director, a staff of 45 full-time equivalents carries out the daily functions of the organisation. Arts advisers, who provide additional expertise and strategic advice on different aspects of the arts, are retained on a consultancy basis.

The Theatre Team at The Arts Council is made up of David Parnell, Head of Theatre, Jocelyn Clarke, Interim Theatre Advisor, Christine O'Neill, Theatre Officer and Maeve Whelan, Theatre Assistant.

#### **Talk Points**

What the Arts Council does

What awards are available

Following/Highlighting Criteria and Guidelines within your Arts Council application and avoiding common mistakes

---

### Culture Ireland



Madeline Boughton

#### Madeline Boughton (Director of Projects and Promotions)

23 Kildare Street  
Dublin 2  
+353 1 631 3906  
1890 383000 ext 3906  
[madelineboughton@dast.gov.ie](mailto:madelineboughton@dast.gov.ie)

# Irish Theatre Institute Information Toolbox 2009

Attending Irish & International Organisations

[www.cultureireland.gov.ie](http://www.cultureireland.gov.ie)

**Culture Ireland** is the state agency for promoting Irish arts worldwide. Culture Ireland creates and supports opportunities for Irish artists to present and promote their work at strategic international festivals, venues, showcases and markets.

Culture Ireland operates a **quarterly funding scheme** [February, May, August and November] to support the international presentation of work by Irish artists and companies. Applications are accepted from both participating artists or from international presenters. In addition, Culture Ireland presents **showcases** of Irish work at key arts events and markets including APAP (New York), Frankfurt Book Fair, SXSW (Austin, Texas) the Edinburgh Festivals and the Venice Biennale. Culture Ireland also operates **See Here**, a scheme designed to enable Irish artists and companies to invite international presenters, curators and promoters to see new Irish work available for touring.

Culture Ireland has provided financial assistance to enable a group of international presenters and promoters attend the Information Toolbox this year.

Information on Culture Ireland funding and programme initiatives is available from [www.cultureireland.gov.ie](http://www.cultureireland.gov.ie)

## Talk Points

What opportunities does Culture Ireland offer to performing artists?

What are the criteria for applying to Culture Ireland for funding?

Outline the application process e.g. deadlines, supporting documentation, budgets etc.

---

## Dublin City Council Arts Office



Sinead Connolly

Sinead Connolly, Central Area Arts Officer

The LAB, Foley Street, Dublin 1

+353 (0)1 222 7846

[sinead.connolly@dublincity.ie](mailto:sinead.connolly@dublincity.ie)

<http://www.dublincity.ie/RECREATIONANDCULTURE/ARTSOFFICE/Pages/TheArtsOffice.aspx>

**Dublin City Council** endeavours to facilitate arts development through direct provision and through partnerships with other organisations and institutions with similar or complementary aims.

The Arts Office is based in The LAB, where facilities include much needed rehearsal space for professional theatre companies. An incubation space supports companies/arts collectives in the development of new work.

Dublin City Council also provides Grants, Bursaries and Artists in Residence programmes, as well as an Artists advice service.

## Talk Points

Dublin City Council Arts Grants & Arts Bursaries

General support to artists and companies including the LAB rehearsal spaces and incubation space

---

## Festivals

## Kinsale Arts Week



Michelle Carew

### Michelle Carew (Festival Director)

1st Floor, 7 Pearse Street, Kinsale, Co. Cork  
+353 (0) 21 470 0010  
[michellecarew@kinsaleartsweek.com](mailto:michellecarew@kinsaleartsweek.com)  
[www.kinsaleartsweek.com](http://www.kinsaleartsweek.com)

**Kinsale Arts Week** is a multi-disciplinary arts festival. It commissions new work in all genres and supports both established and emerging artists.

The programme features local, national and international work including visual art, theatre, music, literature, film, dance, street and family entertainment. There is a keen emphasis on community involvement in the festival with many members of the community engaged in year-round festival projects. Local artists also have the opportunity to showcase their work. The festival seeks to use all possible performance spaces in the historic town including the harbour, the streets, boats, churches and any unused spaces.

Kinsale Arts Week is a curated festival but welcomes submissions from artists in all art forms. It is advised that submissions be made by Christmas 2009.

### **Talk Points**

Is your work site-specific? – can it be created or adapted to exploit any of the spaces mentioned above?

If the proposed work requires a 'black-box' venue please keep in mind that the venues available to Kinsale Arts Week are not custom made performance venues. Very high tech spec.'s and complex production cannot be realistically accommodated. Simpler production requirements can be executed to a high standard however.

---

## Venues

### **The Abbey Theatre**



Aideen Howard

### Aideen Howard, Literary Director

26, Lower Abbey Street, Dublin 1  
+ 353 (0)1 877 2200

## Irish Theatre Institute Information Toolbox 2009

Attending Irish & International Organisations

[jessica.traynor@abbeytheatre.ie](mailto:jessica.traynor@abbeytheatre.ie)  
[www.abbeytheatre.ie](http://www.abbeytheatre.ie)

**The Abbey Theatre** is Ireland's national theatre. Our aim is to present work on the stage which at once reflects contemporary Ireland. We present new writing from at home and abroad, contemporary and classic plays from Europe and America, and plays from the Irish repertoire.

The Literary Department is at the forefront of our engagement with the wider public through initiatives such as the unsolicited script process, which receives up to 350 scripts a year. The reading process enables us to keep up to date with emerging Irish theatrical talent and provides the pool from which we source our New Playwrights Programme (pilot year 2008-09). The New Playwrights Programme is focused on developing the playwright through a number of workshops, talks and discussions which take place over a nine month period.

The Literary Department also engages with more established playwrights through our commissioning process, which generates new and cutting-edge drama for our stage. The commissioning process provides full dramaturgical support to the playwright, with the option of at least one fully cast in-house workshop to aid the playwright in their developmental process.

Annually, we commission a series of shorter plays to be presented as public readings. These short commissions allow us to build a working relationship with a playwright we have not had the chance to work with previously and also to introduce their work to a new audience.

### Talk Points

New Playwrights Programme and how to apply  
The Commissioning Process  
New Writing and the Abbey Theatre

---

## Axis Arts Centre



Ray Yeates

### Ray Yeates (Artistic Director)

Main Street, Ballymun, Dublin 9

+ 353 (0)1 883 2100

[www.axis-ballymun.ie](http://www.axis-ballymun.ie)

[ray.yeates@axis-ballymun.ie](mailto:ray.yeates@axis-ballymun.ie)

**Axis** is a production company, a venue, a resource centre and an arts development company. It opened in 2001 and since 2004 has won four national awards for Best New Play (twice), Best Male Performer and Best Arts Champion. It works with and in collaboration with local people as one of the Flagship buildings in the biggest regeneration in Europe the Regeneration of Ballymun.

Axis programmes at the point of excellence and inclusion seeking opportunity for artistic innovation and access for those interested in participation in the arts whenever possible. There is no division of importance in its programme between arts development and mainstream programming. Axis welcomes everyone from all over Ireland and internationally to join in a learning organisation that acknowledges the creativity of everyone.

Axis has a theatre, dance studio, gallery, art training rooms, recording studio and rehearsal rooms as well a restaurant, bar conference centre and is home to a number of local organisations. Axis is highly engaged in all local schools with artists in residential programmes and tours internationally and nationally frequently.

Above all Axis is a way of working that values competence and learning. Tá fáil spisialta roimh an Ghaeilge i mBaile Munna agus in Axis

# Irish Theatre Institute Information Toolbox 2009

Attending Irish & International Organisations

## Talk Points

How can Axis help young companies to tour into the venue? Axis is open to co-production, subsidised space or downtime rental.

How can touring become easier to do and what control do we have over audiences outside our known base? Axis is open to discounted benefits and a sales based approach.

How can small companies use big companies admin ability on a short term basis

---

## Backstage Theatre



Mona Considine

### Mona Considine (Director)

Farneyhoogan, Longford

+353 (0)43 334 7888

[mona@backstage.ie](mailto:mona@backstage.ie)

[www.backstage.ie](http://www.backstage.ie)

**Backstage Theatre** is a purpose built, state of the art theatre located just outside Longford town in the Midlands. In addition to its 212 seater auditorium the theatre will open a new studio performance space in 2010, which will also be available as a rehearsal room.

Backstage Theatre presents a diverse programme of professional theatre, dance, and music of the highest artistic and production standards which challenges and stimulates our audiences and which provides a platform and resource for artists and companies to present their work. Since the theatre opened its doors in 1995 a growing audience has been treated to a dynamic programme of exciting and inspiring theatre.

In recent years the theatre joined forces with a number of venues to form two touring networks, Nasc a nationwide network of seven venues and Nomad a north midlands based network. Together the venue managers on these networks form a strong voice to attract top theatre companies and to present work that is audience driven. Backstage Theatre has been generously supported by the Arts Council from the outset and is also funded by Longford County Council.

## Talk Points

**Time Frame:** At Backstage we programme about six months in advance. We are currently programming for 2010, particularly the first four months of the year. It is essential that companies seeking dates contact us well in advance of planned tours.

**Terms:** The terms we offer to visiting companies vary between hire of venue, box office splits and guaranteed fee. Our ability to pay a guaranteed fee is influenced and curtailed by our funding year to year and also by the level of risk associated with the show. While we do our best to support young companies presenting new work it is more difficult to offer guaranteed fees in these situations.

**Marketing:** Backstage Theatre had a dedicated Marketing Manager who works with all visiting companies to advertise and promote all events at Backstage. All events are included in our season brochure and on our website. Other advertising includes posterage, mail outs and adverts/features in local print media. The support of the visiting company and the timely provision of press material, images, posters and fliers are crucial to an effective advertising campaign.

---

## The Belltable Arts Centre

## Irish Theatre Institute Information Toolbox 2009

Attending Irish & International Organisations



Joanne Beirne

### Joanne Beirne (Artistic Director)

Belltable Arts Centre  
69 O'Connell St, Limerick  
+353 (0)61 315 871  
[joanne@belltable.ie](mailto:joanne@belltable.ie)  
[www.belltable.ie](http://www.belltable.ie)

The **Belltable** is a multi-disciplinary Arts Centre located in Limerick city centre. It is currently operating off site at 100 seater performance space also in the city centre while significant renovation works are taking place. Programming will return the renovated site in Spring 2010. Belltable hosts an annual Unfringed festival in January that presents all types of performance work. Most recently the Belltable has co-produced *Elements* a season of New Theatre with the Limerick Theatre Hub, a collective of established & emerging theatre practitioners from the mid west region.

The Belltable aims to be a space for arts development, excellent arts provision and social engagement in Limerick and beyond

This is achieved by:

- Presenting work of calibre across the art forms: Visual Art, Live Performance, Film and Literature
- Fostering, developing and nurturing local, national and International arts practitioners and encouraging innovation in their practice
- Making space and resources available to create new work across the art forms
- Fostering Partnerships, networks and create debate and dialogues with arts practitioners, local communities and audiences
- Being a focal point, a vital resource and social space for the arts in Limerick and Beyond

---

## Draíocht



Emer McGowan

### Emer McGowan (Director)

Blanchardstown, Dublin 15  
+ 353 1 8852610  
+353 1 809 8027(direct line)  
[emer@draiocht.ie](mailto:emer@draiocht.ie)  
[www.draiocht.ie](http://www.draiocht.ie)

Since opening in 2001, **Draíocht** has provided access to high quality multi-disciplinary arts experiences to the



## Irish Theatre Institute Information Toolbox 2009

Attending Irish & International Organisations

people of Dublin 15 and environs; experiences that are both stimulating and engaging and offer opportunities for people to engage as audience, creator and participant.

Over 50,000 people a year attend performance events in our two theatre spaces which include a mix of professional local, national and international work as well as work from the community. Our two galleries and rehearsal room are also in demand. We aspire to reaching as wide an audience as possible and our commitment to access for all to the activities and facilities of Draíocht forms the backbone of our work. The performance programme is diverse which reflects the range of audiences we cater for and our ongoing commitment to audience development. As well as our performance and gallery programmes, we have a year round schedule of workshops and projects for schools and family groups. We also run an annual International Festival for Children called Spréacha. Though Draíocht has not been a producing house, the venue is interested in working with artists to develop/show work that audiences will engage with and that artists wish to create.

Draíocht is generously funded by Fingal County Council with additional funding provided by The Arts Council.

### Talk Points

What kind of work are you interested in creating and where does the audience fit in to that?

What kinds of support are you looking for?

Where would/how can Draíocht fit in to your plans?

---

## The George Bernard Shaw Theatre



Róisín McGarr

### Róisín McGarr – Theatre Manager

Centre for Contemporary Art & The George Bernard Shaw Theatre, Old Dublin Road, Carlow

+ 353 (0)59 9172439

[rmcgarr@gbshawtheatre.ie](mailto:rmcgarr@gbshawtheatre.ie)

[www.gbshawtheatre.ie](http://www.gbshawtheatre.ie)

**The George Bernard Shaw Theatre** is situated in the heart of Carlow town on the grounds of St Patrick's College. Opening in September 2009, this 355 seater venue has a local, national and international remit and will produce and present work across all of the performing arts.

Housed alongside VISUAL Centre for Contemporary Art, this stunning building designed by renowned UK architect Terry Pawson sits perfectly in the new skyline of Carlow town alongside the more historic buildings that surround it. With an opening season of world class theatre kicked off by the world première of Barabbas Theatre Company's new play by Little John Nee, *Johnny Patterson, the Singing Irish Clown*, The George Bernard Shaw Theatre will provide audiences in the locality with world class performances from outstanding performing artists and touring companies as well as locally produced work.

The George Bernard Shaw Theatre receives touring productions on a guarantee, split and rental basis and can present work both in the theatre and throughout the building's unique facilities subject to visual arts programming. Programming takes place 4- 18 months in advance of performance. The theatre also has a Performing Artists in Residence Scheme, which is currently hosting Aspiro (formerly Carlow Young Artists Choir) for 09/10.

---

## The Mill Theatre

## Irish Theatre Institute Information Toolbox 2009

Attending Irish & International Organisations



Stephen Faloon

### Stephen Faloon (Theatre Manager)

Dundrum Town Centre, Dublin 14

+353 (0)1 296 9340

[stephen@milltheatre.com](mailto:stephen@milltheatre.com)

[www.milltheatre.com](http://www.milltheatre.com)

**The Mill Theatre** situated in the heart of the new Dundrum Town Centre opened in May 2006. It has 2 spaces: a 207 seat auditorium and a 50 seater studio as well as a full bar and art gallery. Over the last 2 years the Theatre and Studio have staged past fringe productions of *Waiting for Ikea*, *Hairy Bottom and the Jock Strap of Destiny*, *Jack Kairo*, *The Evolution of Lauren Begauin*, *Someone who'll watch over me (Group X)*, *Gerry and the Peace Process* and *Dedalus Lounge* and is quickly gaining the reputation of staging productions that feature in the Fringe Festival. All of these productions have performed excellently at the box office all with occupancy levels of over 60%. The Mill offers box office splits for productions of this nature and also, since it's always more challenging marketing new works, offers PR and Marketing support.

### **Talk Points**

Is your show transferable?

Who is the audience for your show? Is it a lunch time/evening show? Studio/auditorium?

How would you market the show?

---

## **Pavilion Theatre**



Martin Murphy

### Martin Murphy (Director)

Marine Road, Dun Laoghaire, Co. Dublin

+353 (0)1 231 2920

[martin@paviliontheatre.ie](mailto:martin@paviliontheatre.ie)

[www.paviliontheatre.ie](http://www.paviliontheatre.ie)

**Pavilion Theatre** is a purpose built fully staffed theatre of 305 capacity situated on the seafront in the heart of Dun Laoghaire. We programme a mix of theatre, dance and music for audiences from Wicklow to North Dublin. Apart from some children's work the theatre is essentially a receiving venue, working with professional companies usually on a guarantee or split basis, and occasionally for a negotiated rental. The theatre programmes between six and nine months in advance. We have an integrated databox box office and marketing system, email newsletter, and a quarterly brochure that is direct mailed to over 8000 addresses. Our green room is equipped to operate as a "micro studio" of 30/40 capacity, suitable for the presentation of works in progress or showcasing small productions.

## Irish Theatre Institute Information Toolbox 2009

Attending Irish & International Organisations

Pavilion is a regular venue for the Ulster Bank Dublin Theatre Festival. As the Dublin space for the Nasc Network of Touring Venues, Pavilion is jointly responsible for bringing high quality touring theatre to seven regional centres throughout the country since 2006.

### Talk Points

How does Pavilion balance what we would like to programme with what we need to programme

What can we do to help Fringe companies with the making of work?

Where do you think your audience is now and where will they be in three years time?

---

## Project Arts Centre



Willie White

### Willie White (Artistic Director)

39 East Essex Street, Temple Bar, Dublin 2

+353 (0)1 881 9613

[willie@project.ie](mailto:willie@project.ie)

[www.project.ie](http://www.project.ie)

**Project Arts Centre**, established in 1966, is a multidisciplinary arts centre with two performance spaces and a gallery and is an important platform for the presentation of national and international contemporary arts practice in Ireland. The centre presents by independent artists in theatre, dance, music and visual arts and hosts the work of leading festivals and production companies.

Through its Associate Artists scheme Project Arts Centre commissions and produces projects with independent artists. It also supports the development of new work through initiatives such as *Project Brand New* and *Make*, organised in association with Theatre Forum and Absolut Fringe. Recent co-productions and commissions include *Love and Money*, directed by Annabelle Comyn for Hatch Theatre, *At Sea* by Gary Coyle, *A Woman in Progress* by Panti, *In Real Time* by Brokentalkers and *Two Hundred Feet* a dance film by Ella Clarke with live score composed by Dara Smith. Other artists currently under commission include Priscilla Robinson and Seán Carpio.

### Talk Points

What is Project Arts Centre's artistic policy, what is meant by 'contemporary', and how does an artist or company get to be part of the programme?

What kind of information is required to enable the Artistic Director to make a decision about programming work?

How does Project Arts Centre support artists and companies?

---

## Support Organisations

---

### Create



Katherine Atkinson

#### Katherine Atkinson (Project Support and Professional Development)

10/11 Earl Street South, Dublin 8

+353 (0)1 473 6600

[support@create-ireland.ie](mailto:support@create-ireland.ie)

[www.create-ireland.ie](http://www.create-ireland.ie)

**Create** is the national development agency for collaborative arts. Create supports artists across all artforms who work collaboratively with communities, be they communities of place or communities brought together by interest. Collaborative arts is a dynamic and contemporary form of arts practice. There are various related and similar ways of working including participatory arts, socially engaged arts and in the theoretical realm, relational aesthetics. Work that is made collaboratively often exists outside of the gallery or takes place outside the traditional theatre space. It can also be interdisciplinary and for example involve a musician working with a visual artist or an architect with a dance artist. Create seeks to foster current and future potential for collaboration between artists and communities, encouraging art projects that reflect the exciting ways in which collaborative arts represent a complex range of ideas and approaches.

Create offers a range of services for artists, communities and arts organisations which include Professional Development, Learning Development, Management and Consultancy and once-off Initiatives that support and develop collaborative arts. Create manages the Artist in the Community Scheme on behalf of the Arts Council, a funding scheme available twice yearly.

#### **Talk Points**

What Create does

Support available from Create

---

### Irish Theatre Institute



Siobhán Bourke    Jen Coppinger

#### Siobhán Bourke (Co-Director) & Jen Coppinger (Information & Events Manager)

17 Eustace Street, Temple Bar, Dublin 2

+353 (0)1 670 4906/670 4908

[info@irishtheatreinstitute.ie](mailto:info@irishtheatreinstitute.ie)

[www.irishtheatreinstitute.ie](http://www.irishtheatreinstitute.ie)

# Irish Theatre Institute Information Toolbox 2009

Attending Irish & International Organisations

[www.irishtheatreonline.com](http://www.irishtheatreonline.com)

[www.irishplayography.com](http://www.irishplayography.com)

**Irish Theatre Institute** (ITI), funded by the Arts Council, exists to advance the interests of the theatre sector by providing information, support and advice services to established and emerging playwrights, theatre artists and companies; by co-ordinating and delivering research projects; and by initiating and presenting networking, promotion and showcase events at a national and international level.

ITI seeks to maximise creative opportunities and resources for performing artists and producers across theatre and dance in Ireland, Northern Ireland, and internationally. Our international networking and promotion activity has directly resulted in many successful tours of Irish work abroad.

ITI is also a resource organisation, which provides online information and support services to theatre professionals at home and abroad. We have recently launched a new searchable database, Irish Theatre Artists, adding to the information available on our online guide to professional theatre, dance and opera in Ireland. ITI also conducts significant research work, which includes the most extensive online catalogue of new Irish plays, the Irish Playography. This October (1-3) will see the 16th Annual ITI Networking and International Exchange event take place in Dublin, coinciding with the Ulster Bank Dublin Theatre Festival.

Co-Directors: Siobhán Bourke and Jane Daly  
Information & Events Manager: Jen Coppinger  
General Manager: Claire O'Neill

## Talk Points

What Irish Theatre Institute does

Our premises – 17 Eustace Street – and the facilities available

Advice on where do you see your work going.

---

## Theatre Forum



Irma McLaughlin

Irma McLaughlin (Development & Membership Officer)

67 Middle Abbey Street, Dublin 1

+353 (0)1 874 6582

[theatreforum@ireland.com](mailto:theatreforum@ireland.com)

[www.theatreforumireland.com](http://www.theatreforumireland.com)

Theatre Forum is the voice of professional theatre and the performing arts in Ireland. We provide information and advice, professional training and events and advocate on behalf of the sector. Membership includes all the theatres and arts centres around the country; all the professional theatre, dance and opera production companies; and the main arts festivals. Our work includes Events such as:

The annual conference in June each year for 300 people working in all areas of the performing arts

Artists development workshops for theatre and dance artists including *The Next Stage*, *MAKE* and 1 day directors master classes

An annual Open Space meeting in November, regular venue manager meetings, workshops of all kinds including production, fundraising etc

- Audience research and training in arts marketing and e-marketing
- Information and practical advice

## Irish Theatre Institute Information Toolbox 2009

Attending Irish & International Organisations

- A website including the employment notice board for the industry
- Advocacy on behalf of the sector

### Talk Points

The role of Theatre Forum, the work we do and information on membership and benefits

Information on Theatre Forum training events e.g. The Next Stage, Being a Good Employer, Producer training and more

Any questions theatre makers have on funding, insurance, taxation, VAT on non-resident artists, production hubs etc.

---

## Other

---

### Blood+Bandage



Tony McLeane Julie Kelleher

#### Tony McCleane-Fay & Julie Kelleher

(Tony)

c/o Granary Theatre  
+ 353 (0)21 490 4272  
granary@ucc.ie  
www.granary.ie

(Julie)

c/o Meridian Theatre Company  
+353 21 427 6837  
info@meridiantheatre.com  
www.meridiantheatre.com

Working artists are crucial to the cultural life of our nation – its lifeblood, so to speak. **BLOOD+BANDAGE** seek to acknowledge and support our local theatremakers and to capitalise on the breadth of available talent so as to work towards creating a thriving work environment for practitioners and home-produced, high-quality theatrical experiences for audiences.

The emphasis of BLOOD+BANDAGE is specifically on theatre; the creation of new theatre, the staging of new theatre and nurturing of established and emerging talent through workshops and ongoing new works programme, which will support new ideas and ideally generate work.

Originally conceived in 2008 as a Cork-based festival of new theatre, BLOOD+BANDAGE has been evolving throughout 2009, so that the focus has shifted from the single annual event to the creation of a space that supports and encourages the *process* of creating new work through the provision of basic resources to unfunded artists. Some of the projects supported by and workshopped at BLOOD+BANDAGE went on to show at the Cork Midsummer Festival and at the Dublin Fringe. Several other projects will have a work-in-progress showing at the Granary in October 2009. Meridian and Granary, with added support from Triskel Arts Centre and the National Sculpture Factory, will continue to pool resources in 2010 to facilitate BLOOD+BANDAGE's evolution as a year-round space for theatrical experiment and development.

### Talk Points

How can what I do/want to do engage with BLOOD+BANDAGE?

Residencies/workshops - how does this work?

Looking at site specific, off-site or non-traditional work

## **Rough Magic Theatre Company**

### **AIB SEEDS Programme**



Cian O'Brien

#### Cian O'Brien (Associate Producer)

5/6 South Great Georges Street, Dublin 2  
+353 (0)1 6719278  
[www.rough-magic.com](http://www.rough-magic.com)  
[cian@rough-magic.com](mailto:cian@rough-magic.com)

**Rough Magic Theatre Company**, founded in 1984, is committed to developing and producing new Irish work for the stage and to commissioning leading playwrights and theatre artists. The company also presents the best of contemporary international writing and innovative productions from the classical repertoire. Work to date includes over 40 Irish Premieres, the professional debuts of many Irish writers and extensive tours throughout Ireland, UK and beyond.

The AIB SEEDS Programme supports and develops new theatre-makers, offering them the opportunity to work with the company and with each other. At the heart of the process lies mentoring by established and highly experienced artists, along with international research trips, placements with leading practitioners and organisations and hands-on experience throughout on Rough Magic Productions. The deadline for the 5th cycle of the AIB SEEDS programme is 23 October 2009.

#### **Talk Points**

What is the AIB SEEDS Programme?  
The structure of the AIB SEEDS Programme  
How to apply for the AIB SEEDS Programme

---

## **International Producers:**

### **Paul Lucas Productions**



Paul Lucas

#### Paul Lucas

484 West 43, #25F, New York, NY 10036  
+1 212 505 8908  
[prez@paulucasproductions.com](mailto:prez@paulucasproductions.com)  
[www.paulucasproductions.com](http://www.paulucasproductions.com)

## Irish Theatre Institute Information Toolbox 2009

Attending Irish & International Organisations

**Paul Lucas Productions** is a Producing and Touring Company based in New York City. Founded in 2003, PLP specializes in presenting interesting new work at international festivals and venues in the US, Europe, the UK and Australia. His many award-winning clients include *Taylor Mac*, *Bouffon Glass Menajoree*, *Die Roten Punkte*, and several teaching artist/performers and directors.

PLP also offers Consulting, General Management and Public Relations/Marketing for companies looking to perform at the Edinburgh Festival Fringe, the Adelaide Fringe, the Dublin Fringe and several other festivals throughout the world.

---

### SCAMP Theatre



Louise Callow    Jennifer Sutherland

#### Louise Callow & Jennifer Sutherland

44 Church Lane, Arlesey, Beds SG15 6UX, UK  
+44 1462 734843  
+44 7710 491111  
jen@scamptheatre.com  
www.scamptheatre.com

**SCAMP Theatre** (founded by Jennifer Sutherland and Louise Callow) are award-winning international producers, with a superb track record of theatre production in London, on tour and at the world's leading festivals including Edinburgh, Wellington, New York and Melbourne. Scamp Theatre produce original work and also offer outstanding general management services to artists and companies.

Recent productions include:

*Stick Man* by Julia Donaldson (UK and West End 2009), Michael Morpurgo's *The Mozart Question* (London & tour 2009, Edinburgh), *Charlie Victor Romeo* (UK tour 2008 & Edinburgh), *Private Peaceful* (UK tours 2005, 2007 & 2009, Off Broadway 2007, West End 2005 & 2007), *Aesop's Fables* (Edinburgh and UK & New Zealand & Australia tours 2008), *Two Men Talking* (West End & UK tour 2007).

Scamp Theatre won a Fringe First in 2005 for their acclaimed production *screwmachine/eyecandy* by CJ Hopkins. Scamp have been delighted to work with several Irish Companies and artists – most recently: *Tick My Box* (Inis Theatre) Edinburgh Festival Fringe 2006, *Luck* (Making Strange Theatre) Edinburgh Festival Fringe 2009 and UK tour 2010.

---



## International Festivals

---

### **4+4 Days in Motion, International Theatre Festival, Prague**



Pavel Štorek

#### Pavel Štorek (Artistic Director)

Čtyři dny c/o Divadelní ústav Praha Celetná 17 110 00 Praha 1, Czech Republic

+420 224 809 116

[ctyridny@login.cz](mailto:ctyridny@login.cz)

[www.ctyridny.cz](http://www.ctyridny.cz)

During its twelve years of existence the **4+4 Days in Motion, International Theatre Festival** not only found its own audience but also achieved prestige abroad for moving from place to place. The festival with its varied genre overlap, untraditional spaces and accessibility attracts and addresses spectators from various social backgrounds creating an audience which combines both a professional and non professional public. Thanks to this overlap of individual genres, visitors of theatre are brought into contact with visitors of concerts, of fine art and with lovers of dance music. In this respect the festival is quite unique within the Czech context. During the course of the festival, workshops, performances and seminars take place. On the creation of the Site-Specific projects, the Four Days works together with the Czech organization mamapapa which focuses on the preparation and education of progressive performers of the performing arts from the whole of Europe. The integrate part of the festival is the cooperation with the group Jednotka/Unit which has been the creator of the design of the festival non traditional spaces.

Pavel Štorek has been artistic Director of 4+4 days in motion since its inception. He has also worked with the Czech Theatre Institute, and the Prague Quadrennial as well as being artistic director of various projects such as *Prague Orient Express*, *Invasion of Europe*, *Canadian Season in Prague*, *Four Nights* and *European Theatre Alternative*.

---

### **Adelaide Fringe**



Michelle Wigg

#### Michelle Wigg (Registration and Ticketing Co-ordinator)

PO Box 3242, Rundle Mall, Adelaide SA 5000

+61 8 8100 2000

[artists@adelaidefringe.com.au](mailto:artists@adelaidefringe.com.au)

[www.adelaidefringe.com.au](http://www.adelaidefringe.com.au)

## Irish Theatre Institute Information Toolbox 2009

Attending Irish & International Organisations

**Adelaide Fringe** is an annual open access multi arts festival, which takes place over three weeks all over Adelaide, Australia.

Adelaide Fringe began in 1960 as an alternative to the Adelaide Festival, which offered limited opportunity for local and smaller-scale artists. Adelaide Fringe is renowned for fresh ideas, risk, imagination, spontaneity and fun. It is the largest arts event in Australia and only rivalled by the Edinburgh Fringe on a worldwide scale. Artists from across the globe participate alongside home-grown talent, in all artforms. To be a part of the Adelaide Fringe, artists pay a one off registration fee which includes a listing in the Official Guide, plus access to artist services such as ticketing and help finding venues, equipment and a place to stay. Adelaide Fringe also organises its own public events, such as the Opening Night Party and Fringe Family Weekend, which help bring that carnival atmosphere to town.

In 2009, over 530 performing and visual arts events were staged in over 250 venues across the city. Over 3000 artists registered, undertaking over 5000 individual performances, from 15 minute performances to multi-day events. In 2010, Adelaide Fringe will be held from February 19 - March 14.

---

## Brighton Festival Fringe

QuickTime™ and a  
TIFF (Uncompressed) decompressor  
are needed to see this picture.

Nick Stockman

### Nick Stockman (Executive Manager)

12a Pavilion Buildings, Castle Square, Brighton BN1 1EE

+44 1273 260831

[nicks@brightonfestivalfringe.org.uk](mailto:nicks@brightonfestivalfringe.org.uk)

[www.brightonfestivalfringe.org.uk](http://www.brightonfestivalfringe.org.uk)

The **Brighton Festival Fringe** is an independent company limited by guarantee run as a non-profit distributing organization. The Brighton Festival Fringe runs concurrently with Brighton Festival during the first four weekends in May.

The Fringe is the home for non-programmed arts activity in Brighton in May. It represents the interests of any artists in Brighton & Hove and beyond who wish to put on events in the May festival period. It provides a focus for arts organisations, promoters and individual artists and encourages the production of high quality work.

The Fringe works to create a vibrant forum enabling artists to produce progressive work in an attractive environment for audiences. In fact for many arts organisations in Brighton & beyond, some ACE RFO's and others receiving one-off project grants, the Fringe is the highlight of their calendar and a focus for their year round work. The Fringe is committed to providing a superb marketing & coordination service that adds real value for the participating artist by nourishing an environment that develops audiences, increases attendances, maximises media exposure and expands available capacity.

The key stakeholders and major beneficiaries are the participants (made up of artists, event organisers & promoters), venues, the media, the audiences and attendees and the industry (agents, managers etc) but increasingly the Fringe also works with a broad spectrum of organisations in order to deliver the overall vision. The Fringe provides a market place for the business community, is a vital focus for bars and restaurants, a platform for SME's in the creative industries, works closely with national & local brands, plays a major role in the city tourist

## Irish Theatre Institute Information Toolbox 2009

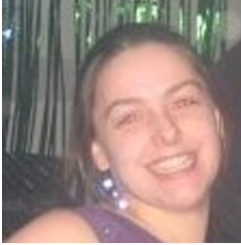
Attending Irish & International Organisations

strategy for May and mentors students in regional higher education & universities.

The Fringe also works to encourage promoters from outside the city to set up in new and existing venues in May and thus contribute to raising standards, increasing ticket sales and enabling the public to enjoy high quality arts events they wouldn't otherwise have access to. The Brighton Festival Fringe is now the third biggest annual open access arts event in the world and the largest in England in terms of number of events.

---

### Edinburgh Festival Fringe



Dani Rae

#### Dani Rae (Promoter Liaison Officer)

180 High St, Edinburgh, EH1 1QS

+44 131 2260026

[admin@edfringe.com](mailto:admin@edfringe.com)

[www.edfringe.com](http://www.edfringe.com)

The **Edinburgh Festival Fringe** is the largest arts festival in the world. It started in 1947 when 8 theatre groups turned up uninvited to the first Edinburgh International Festival (EIF). Over the years, more performers came to Edinburgh to perform on the outskirts of the EIF and by 1958 the Festival Fringe Society was formed to provide information, a central box office and a published programme of all the Fringe shows. Central to the society's constitution was the policy that there should be no artistic vetting from the society. Which still holds true to this very day.

The Fringe caters for the biggest names in showbiz to the performers in the street and covers all sorts of art forms such as theatre, comedy, children's shows, dance, physical theatre, musicals, operas, all genres of music, exhibitions, and events. In 2009, hundreds of groups participated in putting on 2,098 different shows with a total of 34,265 performances in 265 venues.

The Edinburgh Festival Fringe Society aims to provide information, a central box office and a published programme of all the Fringe shows. The Fringe is an open arts festival which means that anyone who wants to perform can.

#### **Talk Points**

How to bring a show to the Edinburgh Festival Fringe

How to make the most of the Fringe i.e. what the Society offers

---

## The Bytom Centre of Culture & The TEATROMANIA Theatre Festival



Dagmara Gumkowska

Dagmara Gumkowska (TEATROMANIA Festival Artistic Director & Head of the Events Department, The Bytom Centre of Culture)

41-902 Bytom, ul. Żeromskiego 27 / Poland  
+48 32) 389 31 09/10 w.109  
+48 506 341 268  
[dagmara.g@gmail.com](mailto:dagmara.g@gmail.com)

The **Bytom Centre of Culture** (Bytomskie Centrum Kultury - BCK) is a modern center of cultural activity. It is a state-funded, non-profit institution. The main areas of its program are the organization of cultural and artistic projects of different kind (theatre performances, theatre and music festivals, concerts, exhibitions, workshops, various interdisciplinary events), projects connected with cultural education, and the popularisation of culture and artistic activities. In addition to this, the Bytomskie Centrum Kultury runs Galeria Kronika which specialises in exhibitions of contemporary art and belongs to the most interesting galleries in south Poland.

In recent years BCK has been eagerly developing its international activities. It often co organizes projects with other artistic institutions in Poland and abroad. The activities of BCK are addressed to people living in our region (Silesia) and are directed at the concrete needs of various social and age groups. BCK is highly regarded and eagerly visited by artists, art critics and audience alike.

**TEATROMANIA** is one of the most important projects of Bytom Centre of Culture and one of the most interesting theatre festivals in Silesia. The event is open to a stylistic variety, which allows presenting both fringe and repertoire performances. Its viewers have been learning how intriguing and diverse the theatre can be for eleven years already.

TEATROMANIA is an annual event and takes place in the spring. This year it was organised for the 11<sup>th</sup> time. The first five editions of the festival concentrated on the Polish performances. Since 2003 the festival presents also foreign guests. The main aim of the festival is to present a diversity of theatrical expression, different inspirations and very different methods of work. Another important feature is that TEATROMANIA presents performances that ask uncomfortable questions, break establishes conventions and look for new, original means of the stage expression. Almost every year the festival enters the city space, looking for and exploring places new to theatre, sets of to meet new audience members and win new hearts. Its programme usually includes various events: performances – both indoor and outdoor - meetings with the theatre companies and audience, theatre and critic workshops for young people and hot discussions.

---

## International Venues

---

### **The Arches**



LJ Dodd

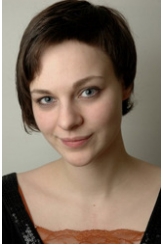
#### LJ Dodd (Arts Programme Producer)

253 Argyle Street, Glasgow, G2 8DL  
+44 (0)7969 961 764  
LJ@thearches.co.uk  
www.thearches.co.uk

**The Arches** in Glasgow city centre is one of Europe's leading arts venues. With its pledge to support and showcase emerging talent alongside major artists, the Arches has secured a deserved, international reputation as an exciting hub of ground-breaking creativity, with a year-round programme of live music, club nights, theatre, corporate events and visual art; winning numerous awards and media accolades along the way. The Arches international performance festival 'Behaviour' takes place in May has played host to performers as diverse as NYC's Ann Liv Young, Taylor Mac, The TEAM and The Riot Group, Russia's Akhe and T.N.F., Dublin's Pan Pan and Junk Ensemble and London's Tim Crouch.

---

### **Forest Fringe**



Deborah Pearson

#### Deborah Pearson (Founder & Co-Director)

The Forest Café, 3 Bristo Place, Edinburgh, EH1 1EY, UK  
[debbie@forestfringe.co.uk](mailto:debbie@forestfringe.co.uk)  
[www.forestfringe.co.uk](http://www.forestfringe.co.uk)

**Forest Fringe** is an artist-led miniature festival within a festival showcasing some of the most exciting new theatre in the UK and Europe. By not charging artists or audiences, and providing accommodation for artists in Edinburgh, Forest Fringe encourages a spirit of risk and experimentation in the midst of the world's largest arts festival. Artists are invited to present work that is at any stage in its development – from a work-in-progress to a finished show. To minimize costs, they perform short runs, while the venue is co-operatively staffed by our companies and volunteers. In 2009 Forest Fringe productions won several accolades, including 4 Total Theatre Award

## Irish Theatre Institute Information Toolbox 2009

Attending Irish & International Organisations

nominations, 2 Arches Brick Award nominations, and a special Fringe First for the venue for "encouraging new forms of work and innovation at the Edinburgh Festival."

Deborah Pearson founded and co-directs Forest Fringe. As a theatremaker she works with a variety of venues and companies internationally, including BAC, the Royal Court, Shunt, the Arches (Glasgow), English Theatre Berlin, and Volcano and the Tarragon (Toronto).

---

### **The Junction Cambridge**



Richard Oyarzabal

#### Richard Oyarzabal, Chief Executive

The Junction, Clifton Way, Cambridge, CB1 7GX  
+44 (0) 1223 578 000  
[lina@junction.co.uk](mailto:lina@junction.co.uk)  
[www.junction.co.uk](http://www.junction.co.uk)

**The Junction Cambridge** is one of the UK's busiest cultural venues presenting over 400 performances each year. The programme encompasses contemporary theatre and dance, live art, music, comedy and clubs. The Junction has two venues – Junction 1 a 850 capacity gig/club venue and a 220 seat theatre space. Over the last two years we have started to present all the strands of our programme across both venues depending on the needs of the artists. We also have an artist development/participation space which we occasionally use as a 100 seat studio theatre. We support the development of theatre, dance and live artists in the East of England working with between 15 and 20 artists and companies each year.

---