

# INTERNATIONAL THEATRE EXCHANGE

19TH ANNUAL

SCHEDULE

## THURSDAY 4TH OCTOBER 2012 WOOD QUAY VENUE & PROJECT ARTS CENTRE

**9.15AM:** REGISTRATION & COFFEE IN WOOD QUAY VENUE

**10:00AM:** WELCOME SIOBHÁN BOURKE & JANE DALY, CO-DIRECTORS, IRISH THEATRE INSTITUTE.

**10:15AM:** SESSION I: IRELAND'S PRESIDENCY OF THE EU – JAN TO JUNE 2013 – WHAT CAN WE EXPECT? **SPEAKERS:** GEOFFREY KEATING, DIRECTOR, PRESIDENCY PLANNING UNIT AT DEPARTMENT OF THE TAOISEACH CIARÁN WALSH, EU PRESIDENCY PROGRAMME MANAGER, CULTURE IRELAND – IRISH ARTS IN EUROPE JAN – JUNE 2013 CATHERINE BOOTHMAN, EU PRESIDENCY PROGRAMME CO-ORDINATOR, THE ARTS COUNCIL WILLIE WHITE, ARTISTIC DIRECTOR/CEO, DUBLIN THEATRE FESTIVAL – MEMBER OF EU CULTURE PROGRAMME FUNDED FESTIVALS NETWORK, NXTSTP CIAN O'BRIEN, ARTISTIC DIRECTOR, PROJECT ARTS CENTRE/PRODUCERS OF IETM PLENARY, DUBLIN APRIL 2013

**11:15AM:** COFFEE

**11:30AM:** SESSION II: PLAYWRIGHT ENDA WALSH IN CONVERSATION WITH SARA KEATING (WRITER & JOURNALIST)

**12:30PM:** MOVE TO PROJECT ARTS CENTRE – LIGHT LUNCH PROVIDED.

**1:00PM:** "IN DEVELOPMENT" PRESENTATION OF BIRD, AN "IN DEVELOPMENT" OPERA PROJECT BY COMPOSER/PERFORMER JULIE FEENEY, DIRECTED BY MIKEL MURFI. (PROJECT ARTS CENTRE, EAST ESSEX ST)

**2:15PM:** RETURN TO WOOD QUAY VENUE

**2:30PM:** MEET THE PRESENTERS – SESSION I A SERIES OF PRE-ARRANGED FACE-TO-FACE MEETINGS BETWEEN IRISH AND INTERNATIONAL PARTICIPANTS

**3:50PM:** COFFEE

**4:00PM:** MEET THE PRESENTERS – SESSION II

**5:00PM:** ENDS

## IRISH THEATRE INSTITUTE



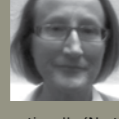
SIOBHÁN BOURKE  
CO-DIRECTOR



JANE DALY  
CO-DIRECTOR



CLAIRE O'NEILL  
GENERAL MANAGER



LUCY MCKEEVER  
PROGRAMME ADMINISTRATOR

17 Eustace Street, Temple Bar Dublin 2, Ireland  
T: +353 1 670 4906  
E: sbourke@irishtheatreinstitute.ie  
E: jdaly@irishtheatreinstitute.ie  
E: coneill@irishtheatreinstitute.ie  
E: mckeever@irishtheatreinstitute.ie  
W: www.irishtheatreinstitute.ie

Irish Theatre Institute operates as a theatre resource organisation nationally (North and South) and internationally. 2012 is the 19th edition of ITI's **International Theatre Exchange**, a key networking and showcasing event from which many successful international tours of Irish work have been launched adding greatly to the promotion of Irish arts abroad.

In recent years ITI has worked in partnership with Culture Ireland and Dublin Theatre Festival on **ReViewed**, a curated showcase of successful Irish shows that are re-staged for presentation to international producers and programmers. In the past three years alone shows presented in **ReViewed** have subsequently played in Cape Town, New York, Tampere, London, Auckland, Edinburgh, Portland and Reykjavik.

IRISH THEATRE INSTITUTE IS CORE FUNDED BY THE ARTS COUNCIL/ AN CHOMHAIRLE EALAÍON WITH PROJECT FUNDING FROM CULTURE IRELAND, DUBLIN CITY COUNCIL AND FORAS NA GAELIGE.

DESIGN: CLUCKWORKS


## INTERNATIONAL DELEGATES

### AUSTRALIA/NEW ZEALAND


#### ADELAIDE FESTIVAL CENTRE BECK PEARCE PROGRAMMING EXECUTIVE (THEATRE AND DANCE), CREATIVE PROGRAMMES

 Festival Drive, off King William Road, Adelaide, South Australia, 5000  
T: +61 8 8216 8600  
E: Beck.Pearce@adelaidefestivalcentre.com.au  
W: www.adelaidefestivalcentre.com.au  
Adelaide Festival Centre offers a diverse programme of festival quality shows for a broad range of tastes and budgets, throughout the year.


#### BRISBANE POWERHOUSE ANDREW ROSS DIRECTOR

 119 Lamington Street, New Farm Qld 4005, Australia  
T: + 61 7 3358 8622  
E: andrewr@brisbanepowerhouse.org  
W: www.brisbanepowerhouse.org  
Brisbane Powerhouse is both a producer and presenter of performing arts, with a year round programme of local and international theatre, dance, and music as well as film, visual arts and public discussion. Brisbane Powerhouse presents World Theatre Festival each February and in 2014, 2016, and 2018 is hosting the Australian Performing Arts Market.

#### IETM-AUSTRALIA COUNCIL FOR THE ARTS COLLABORATION PROJECT SOPHIE TRAVERS DIRECTOR


 19 Square Sainctelette, 1000 Brussels, Belgium  
T: +32 2 201 09 15  
E: sophie.travers@ietm.org  
W: www.ietm.org  
The Australia Council for the Arts and the IETM have decided to work in a collaborative manner to develop greater mutual understanding and knowledge between the Australian contemporary performing arts sector, the IETM network and the European performing arts community.

#### NEW ZEALAND INTERNATIONAL ARTS FESTIVAL SHELAGH MAGADZA ARTISTIC DIRECTOR


 Level 2, Anvil House, 138-140 Wakefield Street, Wellington 6011, New Zealand  
T: +64 4 473 0149  
E: ShelaghM@festival.co.nz  
W: www.festival.co.nz  
New Zealand International Arts Festival is New Zealand's largest cultural event presented biennially in Wellington. In 2012 the Festival presented over 300 events, with over 1000 artists from 35 countries, in the areas of theatre, dance, opera, music, literature and visual arts.

## CANADA

#### HARBOURFRONT WORLD STAGE TINA RASMUSSEN ARTISTIC DIRECTOR


 235 Queens Quay West, Toronto, Ontario, Canada M5J 2G8  
T: +1 416 973 4600  
F: +1 416 973 6055  
E: trasmusse@harbourfrontcentre.com  
W: www.harbourfrontcentre.com  
Harbourfront Centre is Canada's foremost centre for contemporary culture, presenting over 4000 events annually, including the World Stage series – its signature programme of international contemporary theatre, dance and performance.

#### PuSh INTERNATIONAL PERFORMING ARTS FESTIVAL NORMAN ARMOUR SENIOR CURATOR

 300-640 West Broadway, Vancouver, BC, Canada V5Z 1G4  
T: +1 604 605 8284  
E: norman@pushfestival.ca  
W: www.pushfestival.ca  
The PuSh International Performing Arts Festival is one of Vancouver's signature events. Produced over three weeks each January, the PuSh Festival presents groundbreaking work in the live performing arts.  
NEXT FESTIVAL: JANUARY 2013

## EUROPE


#### ARCHA THEATRE ONDREJ HRAB ARTISTIC DIRECTOR

 The Porčí 26, 110 00 Prague 1, Czech Republic  
T: +420 22 171 6111  
E: katarina.dudakova@archatheatre.cz  
W: www.archatheatre.cz/en  
Archa Theatre gives space to new ideas, reflects current social events, produces and presents original theatre, dance and music projects and co-productions, as well as presenting guest appearances by local and international companies.

#### KANUTI GILDI SAAL PRIIT RAUD ARTISTIC DIRECTOR

 Long 20, Tallinn 10133, Estonia  
T: +372 64 64 704  
E: priit@saal.ee  
W: www.saal.ee  
Kanuti Gildi SAAL is the first independent production and event house in Estonia devoted exclusively to the contemporary performing arts. It was opened in 2002 and is situated in Tallinn Old Town.

#### LA COLLINE NINON LECLERE HEAD OF PUBLIC RELATIONS

 15 rue Malte-Brun, 75020 Paris, France  
T: + 33 1 44 62 52 10  
E: n.leclere@colline.fr  
W: www.colline.fr  
La Colline – théâtre national (Paris) is dedicated to supporting contemporary drama and emerging artists. It has two performance spaces: the main theatre (740 seats) and small theatre (200 seats).


#### QUATERNAIRE SARAH FORD PRODUCER

 5 rue Gabriel Laumain 75010 Paris, France  
T: +33 1 53 34 03 69  
E: sarah@quaternaire.org  
W: www.quaternaire.org  
QUATERNAIRE is an international production and tour management agency based in Paris, France.

#### THEATRE DE LA VILLE CLAIRE VERLET DANCE/FESTIVAL PROGRAMMER

 2 Place Du Châtelet Paris 4, France  
T: +33 1 48 87 54 42  
E: cverlet@theatredelaville.com  
W: www.theatredelaville-paris.com  
With 2 venues, a season of 85 different programmes in Dance-Theatre-Music and over 400 performances, Theatre de la Ville's identity is based on creation and international collaborations.


#### ENGLISH THEATRE BERLIN GÜNTHER GROSSER ARTISTIC DIRECTOR

 F40 · Fidicinstrasse 40, 10965 Berlin, Germany  
T: +49 30 693 56 92  
E: art@etberlin.de  
W: www.etberlin.de  
English Theatre Berlin is the centre of English-language theatre in the German capital, presenting a wide spectrum of shows; our aim is to reflect the development and tendencies of international theatre.

#### FESTIVAL THEATERFORMEN ANJA DIRKS FESTIVAL DIRECTOR

 c/o Niedersächsische Staatstheater Hannover Ballhofplatz 5, 30159 Hannover, Germany  
T: +49 511 99 99 25 00  
E: dirks@theaterformen.de  
W: www.theaterformen.de  
Theaterformen is an annual festival for contemporary forms of international theatre, hosted in turns by Hannover and Braunschweig. The next edition will be from June 19th to 30th 2013 in Hannover.

#### ATTIKI CULTURAL SOCIETY LENA ARGIRIS-KOTROTSI CO-DIRECTOR

 5 Vatopeidiou str., 11523 Athens, Greece  
T: +30 210 72 25 469  
E: attiki\_cul@yahoo.com  
W: www.attiki-cultural.org  
Attiki Cultural Society, a non profit organisation, plans, commissions, produces, tours and presents cultural projects with the concept of approaching different cultures, creating an interactive dialogue and combining different art forms.

#### LÓKAL, INTERNATIONAL THEATRE FESTIVAL BJARNI JÓNSSON CURATOR/PLAYWRIGHT RAGNHÉIBUR SKULADÓTTIR GENERAL MANAGER

 Po.Box. 106, 121 Reykjavik, Iceland  
T: +33 1 44 62 52 10  
E: lokal@lokal.is  
W: www.lokal.is  
LÓKAL – International Theatre Festival Reykjavik was founded in 2007. It is an independent venture, enjoying financial support from the City of Reykjavik and the Icelandic Ministry of Culture and Education. LÓKAL focuses on introducing cutting edge theatre to the Icelandic audience and aims at connecting local artists with international theatre scene.  
NEXT FESTIVAL: The festival's 4th edition AUGUST 2013

#### ORKATER MAARTEN VERHOEF DIRECTOR


 Archangelkade 15, 1013 BE Amsterdam, Netherlands  
T: +33 31 20 606060  
E: Maartenverhoef@viardolphi.nl  
W: www.orkater.nl  
ORKATER (a mixture of the Dutch words orkest/theater = orchestra/theatre) primarily makes contemporary music theatre, which is always newly written and newly composed. Orkater productions have received critical acclaim from both public and press.

## UK


#### BRIGHTON FESTIVAL ORLA FLANAGAN ASSOCIATE PRODUCER

 12A Pavilion Buildings, Castle Square, Brighton, BN1 1EE, England  
T: +44 1 273 700747  
E: orla.flanagan@brightonfestival.org  
W: www.brightonfestival.org  
Brighton Festival is the biggest annual mixed arts Festival in England and is one of the country's leading festivals commissioning and producing a wide range of diverse work across three weeks each May. Brighton Festival has a long tradition of attracting the most exciting performers from across the globe, as well as promoting local artists, and bringing fresh, challenging new work to Brighton.


#### LIFT FESTIVAL MARK BALL DIRECTOR

 LIFT, Institute of Contemporary Arts, The Mall, London SW1Y 5AH, England  
T: +44 20 7968 6800  
E: Mark.Ball@liftfestival.com  
W: www.liftfestival.com  
Established in 1981 LIFT, (London International Festival of Theatre), has risen to become one of the most important events in the British arts scene. Its rich and varied programming has presented extraordinary events in both conventional theatres and in more unusual spaces such as disused power stations, churches and canal basins.

## NATIONAL THEATRE

 PADRAIG CUSACK  
ASSOCIATE PRODUCER  
LAURA COLLIER  
HEAD OF STUDIO  
National Theatre, Upper Ground, South Bank, London SE1 9PX, England  
T: +44 20 7 452 3000  
E: pcusack@nationaltheatre.org.uk  
E: lcollier@nationaltheatre.org.uk  
W: www.nationaltheatre.org.uk  
W: www.nationaltheatre.org.uk/discover-more/about-the-national/studio  
The National Theatre presents a mix of new plays and classics on its three stages, tours in the UK and overseas and broadcasts live some of its 20 productions each year.


#### NATIONAL THEATRE OF WALES ABDUL SHAYEK CREATIVE ASSOCIATE

 30 Castle Arcade, Cardiff/CF10 1BW, Wales  
T: +44 29 2035 3073  
E: abdulshayek@nationaltheatrewales.org  
W: www.nationaltheatrewales.org  
National Theatre Wales creates bold, invigorating theatre in the English language, rooted in Wales, with an international reach.


## QUARANTINE

 RICHARD GREGORY  
ARTISTIC DIRECTOR  
ALI DUNICAN  
GENERAL MANAGER  
Islington Mill, James Street, Salford, M3 5HW, England  
T: +44 161 8396520  
E: ali@qtine.com  
W: www.qtine.com  
Quarantine are one of the UK's leading contemporary theatre companies, currently developing **The Dyas Sisters** – a new piece with Dublin artists, Grace and Veronica Dyas.

#### ROYAL EXCHANGE THEATRE RICHARD MORGAN SENIOR PRODUCER

 St Ann's Square Manchester M2 7DH, England  
T: +44 161 615 6704  
E: richard.morgan@royalexchange.co.uk  
W: www.royalexchange.co.uk  
The Royal Exchange Theatre, Manchester is one of the major producing and presenting theatres in the UK. They are particularly interested in performance projects and collaborations that will suit their 750 seat in the round space and 100 seat flexible Studio.

#### ROYAL LYCEUM THEATRE COMPANY MARK THOMSON JOINT CHIEF EXECUTIVE

 Royal Lyceum Theatre, 30b Grindlay Street, Edinburgh, EH3 9AX, Scotland  
T: +44 131 248 4800  
E: MThomson@lyceum.org.uk  
W: www.lyceum.org.uk  
The Royal Lyceum, Edinburgh is one of Scotland's largest and most successful producing companies.


## TRAVERSE THEATRE

 LINDA CROOKS  
EXECUTIVE PRODUCER  
HAMISH PIRIE  
ASSOCIATE DIRECTOR  
10 Cambridge St, Edinburgh, EH1 2ED Scotland  
T: +44 131 288 3223  
E: linda.crooks@traverse.co.uk  
E: hamish.pirie@traverse.co.uk  
W: www.traverse.co.uk  
Edinburgh's **Traverse Theatre** is Scotland's new writing theatre, with an unrivalled reputation for producing contemporary theatre of the highest quality, invention and energy, commissioning and supporting writers from Scotland and around the world.

#### TRICYCLE THEATRE NIC WASS LITERARY MANAGER


 269 Kilburn High Road, London NW6 7JR, England  
T: +44 20 7372 6611  
E: nic.wass@tricycle.co.uk  
W: www.tricycle.co.uk  
The Tricycle views the world through varied lenses, bringing unheard voices into the mainstream. It presents high-quality and innovative work, which provokes debate and emotionally engages. Located in Brent, the most diverse borough in London, the Tricycle is a local venue with an international vision.

#### WARWICK ARTS CENTRE MATT BURMAN HEAD OF PROGRAMMING & AUDIENCES


 Warwick Arts Centre, University of Warwick, Coventry, CV4 7AL, England  
T: +44 24 7652 3734  
E: M.Burman@warwick.ac.uk  
W: www.warwickartscentre.co.uk  
Warwick Arts Centre programmes, presents, commissions and (co-) produces theatre, dance, music, visual arts, film and work for families, across a range of spaces and scales.

## USA


#### ANNENBERG CENTRE FOR THE PERFORMING ARTS MICHAEL ROSE DIRECTOR

 University of Pennsylvania, 3680 Walnut Street, Philadelphia, PA 19104-6219, USA  
T: +1 215 898 6702  
E: mrose@ac.upenn.edu  
W: www.pennpresents.org  
The Annenberg Center is a major cultural destination and crossroads in the performing arts, connecting Philadelphia regional audiences and the University of Pennsylvania through exposure to innovative human expression in theatre, music, and dance.

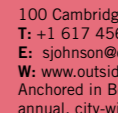
#### PITTSBURGH DANCE COUNCIL, PITTSBURGH CULTURAL TRUST PAUL ORGANISAK VICE PRESIDENT OF PROGRAMMING & EXECUTIVE DIRECTOR

 803 Liberty Ave, Pittsburgh, PA 15222, USA  
T: +1 412 471 1916  
E: organisak@trustarts.org  
W: www.pgharts.org  
The Pittsburgh Cultural Trust presents international performing and visual arts and mounts major international festivals including country-focused and Pittsburgh International Festival of Firsts, a 3-week multidisciplinary Festival of US premiers, the next is planned for fall 2013. The Pittsburgh Dance Council, a division for the Pittsburgh Cultural Trust, presents world-class contemporary dance.


#### GOODMAN THEATRE TANYA PALMER DIRECTOR OF NEW PLAY DEVELOPMENT

 170 N Dearborn St, Chicago, IL 60601, USA  
T: +1 312 443 3800  
E: TanyaPalmer@goodmantheatre.org  
W: www.goodmantheatre.org  
Goodman Theatre is Chicago's oldest and largest not-for-profit theatre. The Goodman is committed to producing both classic and contemporary works, giving full voice to a wide range of artists and visions.

#### OUTSIDE THE BOX SHERRIE JOHNSON ARTISTIC DIRECTOR

 100 Cambridge Street, Suite 2200, Boston, MA 02114  
T: +1 617 456 8105  
E: sjohnson@outsidetheboxboston.com  
W: www.outsidetheboxboston.com  
Anchored in Boston, Massachusetts, **Outside The Box** is an annual, city-wide, multi-arts festival designed to change the way people engage and explore creativity, innovation and invention through the discovery and participation of the arts.

#### STEPPEWOLF THEATRE AARON CARTER LITERARY MANAGER

 758 W North Avenue, 4th floor, Chicago, IL 60610, USA  
T: +1 312 335 1888  
E: acarter@steppenwolf.org  
W: www.steppenwolf.org  
Steppenwolf Theatre Company is where great acting meets big ideas. Our passion is to tell stories about how we live now. Our mission is to engage audiences in an exchange of ideas that makes us think harder, laugh longer, feel more.

## IRISH DELEGATES

## THEATRE & DANCE COMPANIES

### ABBEY THEATRE

LARA HICKEY ASSISTANT PRODUCER



26/27 Lower Abbey Street, Dublin 1, Ireland  
T: +353 1 878 7222

E: lara.hickey@abbeytheatre.ie  
W: www.abbeytheatre.ie

As Ireland's national theatre the **Abbey Theatre** produces an annual programme of diverse, engaging, innovative Irish and

international theatre and invests in and promotes new Irish writers and artists.

DTF 2012: **The Picture of Dorian Gray & Shbari**

### ANU PRODUCTIONS



LOUISE LOWE  
ARTISTIC DIRECTOR  
HANNAH MULLAN  
CREATIVE PRODUCER

C/O Irish Theatre Institute,  
17 Eustace Street, Dublin 2, Ireland  
T: +353 86 352 5316

E: anuproductions1@gmail.com

**ANU** develops and produces experimental work (incorporating theatre, visual art and dance) in gallery and off site contexts.

DTF 2012: **The Boys of Foley Street**

### BRANAR



MARC MAC LOCHLAINN  
ARTISTIC DIRECTOR  
JOANNE BEIRNE  
PRODUCER/TOURING MANAGER

Branar Téatar du Pháistí, Ath an Ghluigair, Bearna, Co. na Gaillimhe, Eire  
T: +353 91 590 999

E: marc@branar.ie

W: www.branar.ie

**BRANAR** – Telling big stories for little citizens. We make quality theatre for children & family audiences. We have toured

throughout Ireland & in the past 12 months we have started to tour internationally.

### BROKENTALKERS



FEIDLIM CANNON  
CO-ARTISTIC DIRECTOR  
GARY KEGAN  
CO-ARTISTIC DIRECTOR

88 Bellevue, Islandbridge, Dublin 8, Ireland  
T: +353 85 760 3314

E: brokentalkers@gmail.com

W: www.brokentalkers.com

**Brokentalkers** are committed to touring their work internationally and developing relationships with international partners.

To date Brokentalkers have presented work in Scotland, England, Finland, Germany, Iceland, Sweden, Netherlands, Belgium, France, New Zealand and USA. **The Blue Boy** a Co-production with European partners will be performed in a number of international festivals in 2012/13.

DTF 2012: **Have I No Mouth**

### CALIPO THEATRE COMPANY

COLLETTE FARRELL PRODUCER



Barlow House, Narrow West Street, Drogheda, Co. Louth, Ireland  
T: +353 41 983 7455

E: collette@calipo.ie

W: www.calipo.ie

**Calipo** produces contemporary creative work for young audiences; work that explores,

dissects, and celebrates the human experience.

DTF 2012: **Pineapple**

### CARPET THEATRE

CIARÁN TAYLOR ARTISTIC DIRECTOR



11 Russell Avenue East, East Wall, Dublin 3, Ireland  
T: +353 86 367 9342

E: carpettheatre@gmail.com

W: www.carpettheatre.com

**Carpet Theatre** has toured new and devised work in and outside Ireland. Connecting

with audiences through various movement styles including

site-specific, mask theatre and bouffon.

### THE COMPANY



NYREE YERGAINHARSIAN  
COMPANY MEMBER  
JOSE MIGUEL JIMENEZ  
COMPANY MEMBER



39 East Essex Street, Temple Bar, Dublin 2, Ireland  
T: +353 86 852 2440

E: thecompanyireland@gmail.com

W: www.thecompanyireland.com

A young ensemble of actors, creating unique devised performances for theatre.

DTF 2012: **Politik**

### DRUID THEATRE COMPANY



TIM SMITH  
GENERAL MANAGER  
SARAH LYNCH  
INCOMING GENERAL MANAGER



Druid, Flood Street, Galway, Ireland  
T: +353 91 568 660

E: info@druid.ie

W: www.druid.ie

**Druid** is one of the most widely touring theatre companies working in the English language. **Druid Murphy** is approaching the end of a six month tour that has played

New York, London and Ireland. The production closes at the Kennedy Center in Washington DC on October 20th.

DTF 2012: **Druid Murphy**

### THEEMERGENCYROOM

OLWEN FOUÉRÉ PERFORMER/DIRECTOR



38 Moyné Road, Ranelagh, Dublin 6, Ireland  
T: +353 86 816 5288

E: olwenfouere@gmail.com

W: www.olwenfouere.com

**TheEmergencyRoom** is an artistic entity created by Olwen Fouéré for the development of projects in need of immediate attention.

Final production of each work takes place with the collaboration and partnership of established production companies and presenters. Previous work includes the award-winning **Sodome, my love** produced in association with Rough Magic.

### EMMA MARTIN DANCE

EMMA MARTIN ARTISTIC DIRECTOR



T: +353 87 905 1511  
E: info@emmamartindance.com  
W: www.emmamartindance.com

**Emma Martin Dance** is led by Irish choreographer Emma Martin and produces new work using dance, live music, text and any other means necessary to create work

that is triggered by the world around us, the characters that inhabit it and the situations that stir it.

### FIDGET FEET AERIAL DANCE THEATRE

ADAM O'KEEFFE GENERAL MANAGER



The Paddocks, Derrydoan, Rathowen, Co. Westmeath, Ireland  
T: +353 87 988 7530

E: adam@fidgetfeet.com

W: www.fidgetfeet.com

A pint-sized Cirque du Soleil originating from Ballybofey. **Fidget Feet Aerial Dance Theatre**

is Ireland's leading aerial dance theatre company, creating spectacular indoor and outdoor productions.

### FISHABLE:

THE NEW PLAY COMPANY



JIM CULLETON  
ARTISTIC DIRECTOR  
MARKETA DOWLING  
GENERAL MANAGER



Shamrock Chambers,  
1/2 Eustace Street, Dublin 2, Ireland  
T: +353 1 670 4018

E: marketa@fishamble.com

W: www.fishamble.com

**Fishamble** is dedicated to the discovery, development and production of new plays. In 2012, it is performing throughout Ireland

and in the UK, Europe and USA.

### HATCH THEATRE COMPANY

ANNABELLE COMYN ARTISTIC DIRECTOR/DIRECTOR



24 Long Lane, Dublin 8, Ireland  
T: +353 85 727 1073

E: annabelle@hatchtheatrecompany.com

W: www.hatchtheatrecompany.com

**Hatch Theatre Company** is at the forefront of contemporary theatre production in Ireland. It was founded in 2004 by director

Annabelle Comyn, who has recently had huge critical and box office success with her productions of **Pygmalion** and **The House for The Abbey Theatre. The Talk of The Town** was initiated and developed in association with Hatch.

DTF 2012: **The Talk of The Town**

### HOTFORTHEATRE

AMY CONROY ARTISTIC DIRECTOR



Six in the Attic, Irish Theatre Institute,  
17 Eustace Street, Dublin 2, Ireland  
T: +353 87 905 1511

E: jen@hotfortheatre.com

W: www.hotfortheatre.com

Award winning company **HotForTheatre** believes that theatre should provoke, move

and delight in equal measures. The company has toured to the US, Iceland and plans to tour nationally and internationally in 2013.

DTF 2012: **Eternal Rising of the Sun**

### JUNK ENSEMBLE



JESSICA KENNEDY  
CO-ARTISTIC DIRECTOR  
MEGAN KENNEDY  
CO-ARTISTIC DIRECTOR



84 Bellevue, Islandbridge, Dublin 8, Ireland  
T: +353 87 211 7571

E: info@junkensemble.com

W: www.junkensemble.com

**junk ensemble** is a multi-award winning theatre company with a commitment to creating works of brave and imaginative dance theatre. Their work is currently touring

internationally and nationally.

DTF 2012: **Bird with Boy**

### LANDMARK PRODUCTIONS

ANNE CLARKE PRODUCER



75 Bath Avenue, Dublin 4, Ireland  
T: +353 1 667 4684

E: anneclarke@landmarkproductions.ie

W: www.landmarkproductions.ie

**Landmark** is one of Ireland's leading theatre producers. Recent co-productions include **Colm Toibin's Testament**, directed by Garry

Hynes, and **Enda Walsh's Misterman**, starring Cillian Murphy.

DTF 2012: **The Talk of the Town**

### MACNAS



NOELINE KAVANAGH  
ARTISTIC DIRECTOR  
SHARON O'GRADY  
COMPANY PRODUCER



Fisheries Field, Salmon Weir Bridge, Galway, Ireland  
T: +353 91 568 896

E: noeline@macnas.com

E: sharon@macnas.com

W: www.macnas.com

**Macnas** is a site specific theatre, spectacle and professional company. The work

is narrative led with a strong visual dynamic. Engineering magical images we present playful, delirious and delightful performances using a combination of diverse art forms.

### NATURAL SHOCK

DONNACADH O'BRIAIN ARTISTIC DIRECTOR



Linquenda, The Hollows, Kew Bridge, London TW9 0DZ, England  
T: +44 7725 815 854

E: donnacadh.obriain@gmail.com

W: www.peep-play.com

**PEEP** is a self contained pop-up peepshow theatre, designed for national

and international touring. It contains a repertoire of work, which will grow through collaboration with venues and festivals.

### OUROBOROS THEATRE

PAMELA MURRAY PRODUCER/COMPANY MANAGER



Dublin Castle, Dublin 2, Ireland  
T: +353 1 672 4718

E: pamelam@ouroboros.ie

W: www.ouroboros.ie

**Ouroboros** is dedicated to dramatic alchemy, to mixing and combining the base elements of theatre. It always strives to be original, to

delight and to energise. The company has a 17 year history of touring productions both nationally and internationally.

### PAN PAN



GAVIN QUINN  
ARTISTIC DIRECTOR  
AOIFE WHITE  
GENERAL MANAGER



Curved St, Temple Bar, Dublin 2, Ireland  
T: +353 1 633 4493

E: info@panpantheatre.com

W: www.panpantheatre.com

Developing new performance ideas is at the centre of **Pan Pan's** raison d'être which is born from a desire

to be individual and provide innovation

in the development of theatre art.

DTF 2012: **Everyone is King Lear in his Own Home**

### ROUGH MAGIC THEATRE COMPANY

DIEGO FASCIATI EXECUTIVE PRODUCER



18 South Great George's Street, Dublin 2, Ireland  
T: +353 1 671 9278

E: diego@roughmagic.ie

W: www.roughmagic.ie

Founded in 1984, **Rough Magic** produces new Irish work for the stage, innovative

productions from the classical repertoire and the best of contemporary international writing. Rough Magic also runs SEEDS – a development programme for young theatre artists.

### TALL TALES THEATRE COMPANY

DEIRDRE KINAHAN PLAYWRIGHT



Solstice Arts Centre, Navan, Co. Meath, Ireland  
T: +353 87 683 8869

E: deekinahan42@gmail.com

W: www.talltales.ie

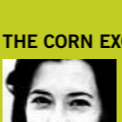
Deirdre Kinahan is an internationally celebrated playwright and artist in residence

at Solstice Arts Centre Navan. Previous productions **Bogboy** and **Moment** won awards and great critical acclaim in

London and New York.

DTF 2012: **Halcyon Days**

### THE CORN EXCHANGE THEATRE COMPANY LTD



ANNIE RYAN  
ARTISTIC DIRECTOR  
RACHEL MURRAY  
PRODUCER



Priory Building, John Street West, Dublin 8, Ireland  
T: +353 87 236 5767

E: annie@cornexchange.ie

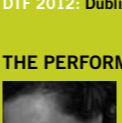
W: www.cornexchange.ie

Award-winning ensemble company founded in 1995 by Annie Ryan. Its distinctive, transformational style combines strong

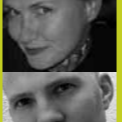
physical theatre practice, dynamic text and cutting-edge design and technology.

DTF 2012: **Dubliners**

### THE PERFORMANCE CORPORATION



JO MANGAN  
CEO  
TOM SWIFT  
ARTISTIC DIRECTOR



Castletown House, Celbridge, Co. Kildare, Ireland  
T: +353 86 856 7094

E: tom@theperformancecorporation.com

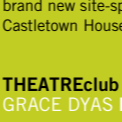
W: www.ThePerformanceCorporation.com

The Performance Corporation is an award-winning company with a mission to create "daring performance adventures in surprising

places". The company is currently developing **Big House** – a brand new site-specific arts festival to take place next August at Castletown House in Celbridge, County Kildare.

### THEATREclub

GRACE DYAS PRODUCER/DIRECTOR



c/o Project Arts Centre, 39 East Essex Street, Dublin 2, Ireland  
T: +353 85 191 8419

E: theatreclubbing@gmail.com

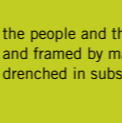
W: www.theatreclubbing.com

We are Shane Byrne, Doireann Coady and Grace Dyas. We make shows about us and

the people and things around us. Created with fun and love, and framed by manic ambition our work is visually electrifying, drenched in substance and socially engaged.

### THEATRE LOVETT

MUIREANN AHERN JOINT ARTISTIC DIRECTOR



6 in the Attic, Irish Theatre Institute,  
17 Eustace Street, Temple Bar,  
Dublin 2, Ireland  
T: +353 86 822 3377

E: muireann@theatrelovett.com

W: www.theatrelovett.com

**Theatre Lovett** produce theatre for young and old. In 2013 they will tour the USA with **The Girl who Forgot to Sing Badly** (originally produced by The Ark and Theatre Lovett). They are the original commissioners of **B for Baby** (Best New Play, Irish Times Theatre Awards 2010) and are the 2012 winners of the David Manley Emerging Entrepreneur Award.

DTF 2012: **The House that Jack Filled**

### WIDE OPEN OPERA

FERGUS SHEIL ARTISTIC DIRECTOR



PO Box 8602, Dublin 8, Ireland  
T: +353 87 238 6207

E: fergus@wideopenopera.com

W: www.wideopenopera.com

**Wide Open Opera** was formed in 2012 by Fergus Sheil. Its ambition is to produce a wide range of opera for audiences in Ireland.

DTF 2012: **Tristan und Isolde**

## VENUES

### BACKSTAGE THEATRE

MONA CONSIDINE GENERAL MANAGER



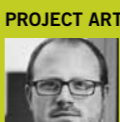
Farneyhoogan, Longford, Ireland  
T: +353 43 334 7888

E: mona@backstage.ie

W: www.backstage.ie

**Backstage Theatre** is a purpose built, state of the art theatre located just outside Longford town in the Midlands.

### PROJECT ARTS CENTRE



CIAN O'BRIEN  
ARTISTIC DIRECTOR  
LIAN BELL  
PRODUCER, IETM 2013



39 East Essex Street,  
Temple Bar, Dublin 2, Ireland  
T: +353 1 881 91613

E: cian@projectartscentre.ie

W: www.projectartscentre.ie

**Project Arts Centre** is Ireland's leading venue for contemporary performing and visual arts.

**IETM** international network for contemporary